



# EMBANKMENT SLIDES



**UPC PARKS CONCRETE  
EMBANKMENT SLIDES ARE:  
FAST, COOL, COST EFFECTIVE  
AND VIRTUALLY INDESTRUCTIBLE!**

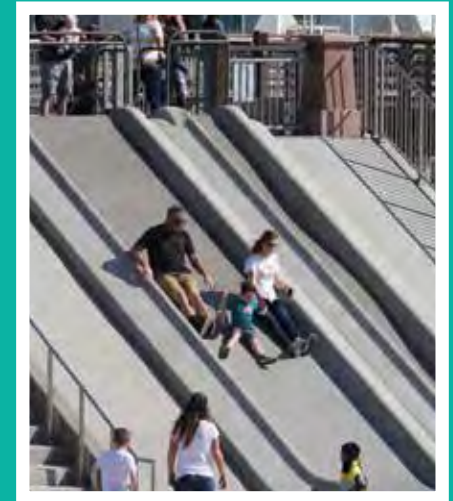
[www.upcparks.com](http://www.upcparks.com) | 530-605-2664



# EMBANKMENT SLIDES

“ *The concrete slides provided by UPC Parks provide an excellent alternative design to traditional metal slides. They are just as fast, do not become nearly as hot during the summer months, and are competitively priced. In addition, the fact they are uniquely fabricated for each playground project makes them completely customizable for use in unique and non-traditional play environments and we have seen them receive extensive use by children and adults alike.* ”

— Cecil Penland, PLA, ASLA  
RUNDELL ERNSTBERGER ASSOCIATE



## WHY CONCRETE?

Concrete is incredibly durable, fast sliding, and cooler than other materials. It is the GO-TO construction material for durable, long-lasting projects. Concrete slides made in the Bay Area of California in the 1970's are still in use today! UPC Parks Concrete can be polished to an incredibly smooth finish, making for a fast and consistent sliding surface.

Concrete doesn't heat up the way steel and plastic does, which can become unusable in direct sunlight. Concrete slides can be made with white cement and light colored aggregates, which will stay even cooler!

***FAST, COOL, COST EFFECTIVE  
AND VIRTUALLY INDESTRUCTIBLE!***



# DURABLE

# COOL IN THE SUMMER

# FAST AND FUN

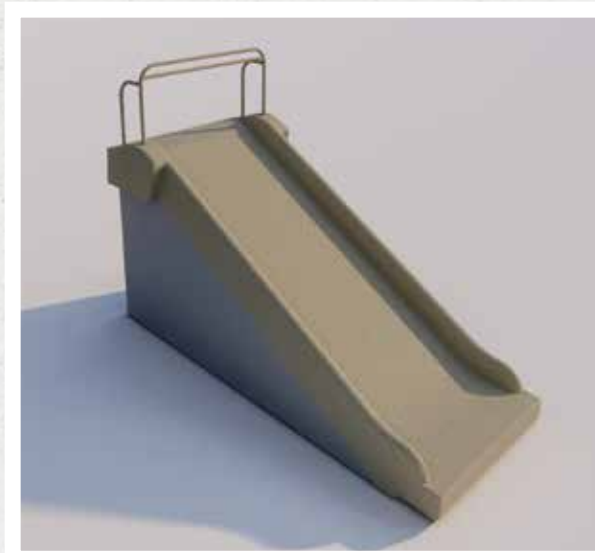
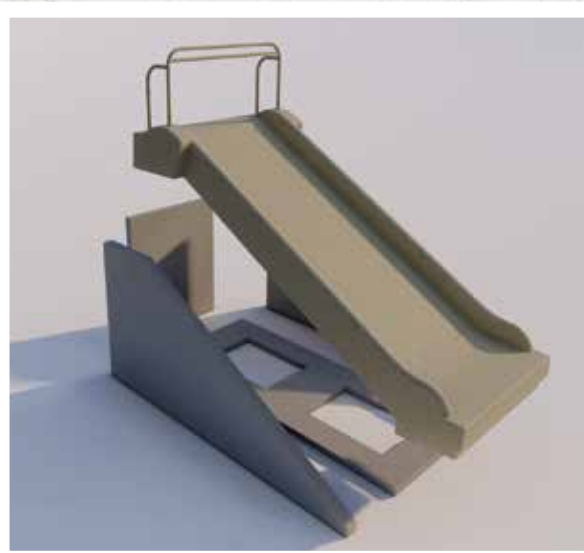
# COST EFFECTIVE

## UPC PARKS TAKES THE GUESS WORK OUT OF INSTALLING YOUR SLIDE.

### SIMPLE SET DESIGN

Embankment slides have a well deserved reputation for being difficult to design and install properly. UPC Parks is changing that!

- The Simple Set base supports the slide at the correct angle.
- The Slide, with the base and sit down bar, arrive as a single unit\*.
- Slide is installed on flat compacted base rock. In some cases, additional site poured concrete may be necessary.



\*8', 9' and 10' slides may be shipped as multiple pieces

“ I had two slides installed last year, in the same month. One was a Simple Set, the other wasn't. The NON-Simple Set slide proved difficult to install. The hill wasn't tall enough, and wasn't at the right angle. With numerous mound adjustments and extra time spent by all parties, it was finally installed correctly. In comparison, the Simple Set installation was incredibly easy, which made me AND my client happy! ”

— Jean Tyan, Sales Account Manager  
MIRACLE PLAYSYSTEMS

# SIMPLE SETS

### WHY USE A SIMPLE SET DESIGN?

Embankment slides need to be anchored in place. Traditionally, this was with a footing at the top and bottom of the slide, and several places along the slope itself. Each of these portions of the footing need to be at the right height and angle, relative to one another. Any deviation means the slide isn't installed properly, and may not function as intended, or be compliant with the National Safety Standards.

Simple Set Slides take the guesswork out of the footings. Once installed on flat, level base rock or slab, the slide is fully supported. It will be at the ideal angle, and compliant with the National Safety Standards. Simple Set slides will save time and a substantial amount of money during installation.

[www.upcparks.com](http://www.upcparks.com) | 530-605-2664

# CHOOSE YOUR SLIDE HEIGHT

## STANDARD SLIDE SIZES



### Rise of Slide - Length of Slide Bed

- 3' Tall Hill    6' Long Slide    Ages 2-5
- 4' Tall Hill    8' Long Slide    Ages 2-5
- 5' Tall Hill    10' Long Slide    Ages 3-12\*
- 6' Tall Hill    12' Long Slide    Ages 3-12\*
- 7' Tall Hill    14' Long Slide    Ages 5-12
- 8' Tall Hill    16' Long Slide    Ages 5-12
- 9' Tall Hill    18' Long Slide    Ages 5-12
- 10' Tall Hill    20' Long Slide    Ages 5-12

\*Single width or divided slides only for ages 3-12.



## MEASURING YOUR HILL

Standard UPC Parks Embankment Slides are sold in one foot increments from 3-10 feet. These slides are sold based on the RISE of the hill.

UPC Parks standard slides all use a 30° slope. It is the Rise & Slope that determine the Run dimension. Some existing hills will need to be modified to accommodate the 30° slope.



## CUSTOM SLIDES AVAILABLE

If you require a slide height or shape that is not standard, not to worry. UPC Parks' design department can design and quote a slide to fit your site.



## ADA DESIGN

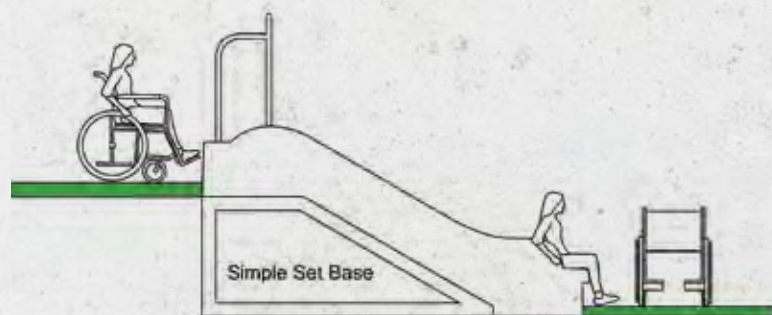
### UPC PARKS CREATES PLAY SPACES FOR KIDS OF ALL ABILITIES!

Our embankment slides are designed with all kids in mind. We've worked hard creating safe, efficient and barrier-free ways for children requiring any type of mobility device to access our slides. We are presenting three options:

**1 FLUSH ENTRANCE:** This is used in a situation when the child has left their mobility device behind. For example, they have exited their wheelchair at the bottom of the slope, and climbed up the slope before arriving at the slide entrance. This is similar to a child accessing a slide on a traditional Post/Deck play structure. In this case, we suggest that an ADA Transfer Station be located at the bottom of the slope, to help facilitate leaving their wheelchair.

**2 TRANSFER PLATFORM:** This type of slide entrance is used if there is wheelchair access to the top of the slope. For example, there is an accessible sidewalk that can take users up to the top of the hill. In this case, the child can travel to the slide entrance while still in their wheelchair. For these situations, the slide's transition platform, the flat area at the top of the slide, will be 12" taller than the adjacent ground. The transition platform will also function as an ADA Transfer Platform for children in wheelchairs. It should be noted that safety surfacing is NOT required at the top of the slope, around this 12" (maximum height) tall slide transition/transfer platform.

**3 TRANSFER STEP WITH THE TRANSFER PLATFORM:** This type of slide entrance is similar to the Transfer Platform, above, with the addition of an ADA accessible 6" tall step. This allows the slide to be accessed both by a child in a wheelchair, and also a child who has left their mobility device behind. In this case, the child will need the intermediate step to access the 12" tall transfer platform.



# 1

**FLUSH ENTRY** – used on hills and mounds that do not have wheelchair access to the top of the slide. We suggest you include an ADA Transfer Platform/Step at the base of the slope.



# 2

**TRANSFER PLATFORM** – used when you have wheelchair access to the top of the slope and the bottom of the slope.



# 3

**TRANSFER STEP WITH TRANSFER PLATFORM** – used when you have wheelchair access to the top of the slope, and ALSO want children to be able to access the slide from ground level.





“ Children still need a childhood filled with outdoor play.  
 Playgrounds, fresh air and slides can help their imaginations soar. ”

# CHOOSE YOUR SLIDE WIDTH

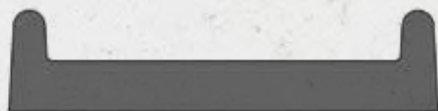
**STANDARD SLIDE WIDTHS** — We've created a set of standard widths that work well for most outdoor spaces.



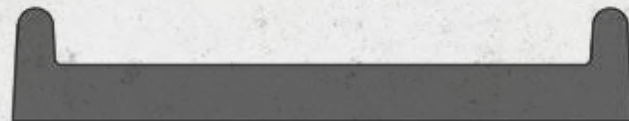
**SINGLE WIDE SLIDE**  
 2'- 8½" Wide



**DOUBLE WIDE SLIDE**  
 4'- 0" Wide



**TRIPLE WIDE SLIDE**  
 5'- 9" Wide

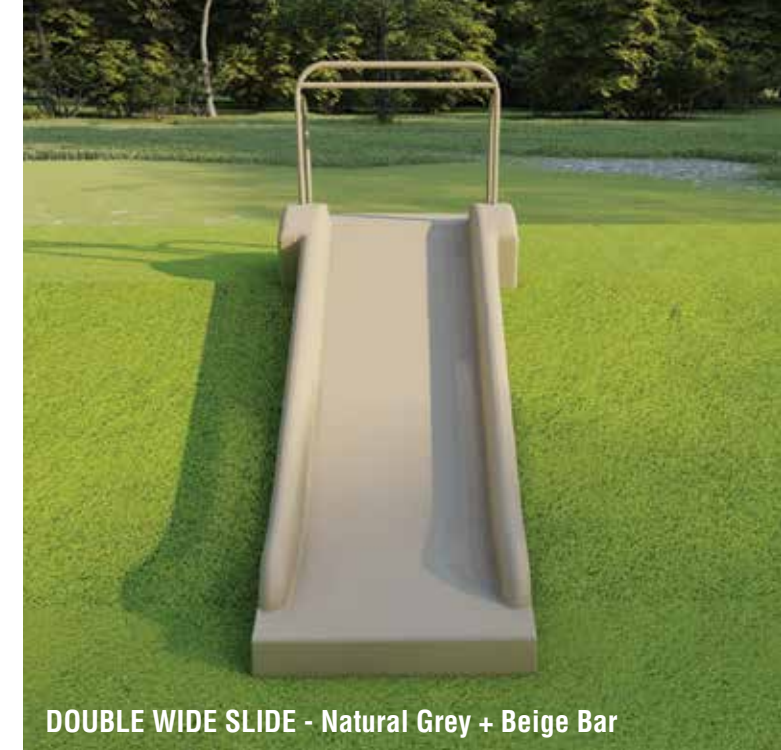


**QUADRUPLE WIDE SLIDE**  
 7'- 4" Wide

See spec sheets for detailed dimensions



**SINGLE WIDE SLIDE - Natural Grey + Beige Bar**



**DOUBLE WIDE SLIDE - Natural Grey + Beige Bar**



**TRIPLE WIDE SLIDE - Natural Grey + Green Bar**



**QUADRUPLE WIDE SLIDE - Natural Grey + Chocolate Bar**

# CHOOSE YOUR **SLIDE OPTIONS**

**STANDARD SLIDE OPTIONS** — Sometimes you need something a little different.



**DOUBLE WIDE DIVIDED SLIDE**  
4'- 0" Wide



**TRIPLE WIDE DIVIDED SLIDE**  
5'- 9" Wide



**WINGED SLIDE**  
SINGLE, DOUBLE & TRIPLE  
5'- 4" Wide  
Built in 21" Side Clearance Zone



**ROCK WINGED SLIDES**  
SINGLE, DOUBLE & TRIPLE  
5'- 4" Wide  
Built in 21" Side Clearance Zone



Triple Wide Divided Slide



Triple Wide Winged Divided Slide

## SIDE OPTIONS

- **DIVIDED SLIDES** are ideal for multiple children sliding at the same time, especially when they want to race! They are also more suitable for children with disabilities, while still allowing multiple children to slide at the same time.
- **WINGED SLIDES** are perfect when natural landscape is used on the adjacent slope, next to the slide. The wing is 21" wide, and covers the required Slide Clearance Zone (Per ASTM F1487). Using the Winged Slide insures that landscape materials, such as stones or plants, are not inadvertently placed too close to the slide.



Winged Slide with Landscape Boulders

See spec sheets for detailed dimensions

[www.upcparks.com](http://www.upcparks.com) | 530-605-2664



# CHOOSE YOUR **SLIDE COLOR**

**STANDARD COLOR OPTIONS** — Choose from four standard concrete color options, and five sit down bar color options.

## PRECAST CONCRETE SLIDE COLOR OPTIONS:



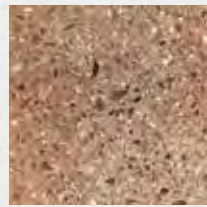
FIESTA



SOFT GREY

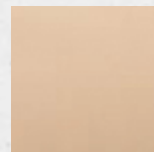


SHASTA WHITE

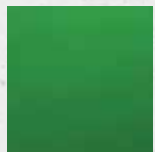


TERRACOTTA

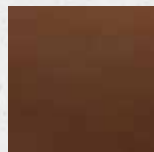
## POWDER COATED STAINLESS STEEL SIT DOWN BAR COLOR OPTIONS:



BEIGE



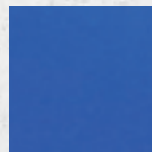
GREEN



CHOCOLATE



SILVER



BLUE

Custom colors are also available, for both the concrete and the sit down bars.



# CHOOSE YOUR **SLIDE TEXTURE**

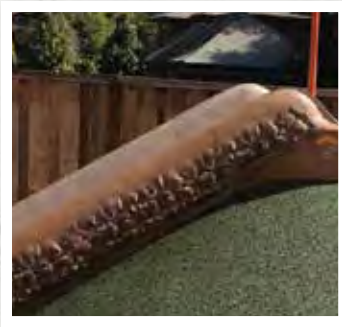
**STANDARD TEXTURE OPTIONS** — *It doesn't always have to be smooth!*



**SMOOTH TEXTURE**



**CLEAN  
FINISHED LOOK**



**LOG TEXTURE**  
Single Wide Only



**HOLLOWED OUT  
NATURAL LOG**



**ROCK TEXTURE**  
Single Wide Only



**BLENDS WITH THE  
NATURAL ENVIRONMENT**

# NEED A **CUSTOM SLIDE?**

If you require a slide height or shape that is not standard, not to worry. UPC Parks' design department can design and quote a slide to fit your site.

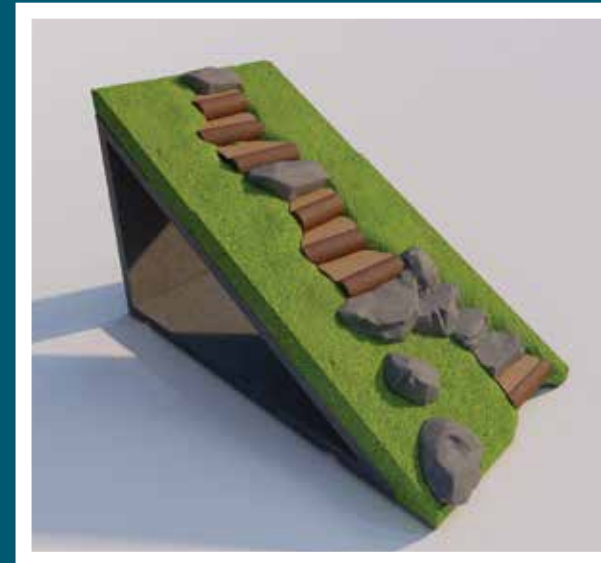


# ACCESSORIZE YOUR SLIDE

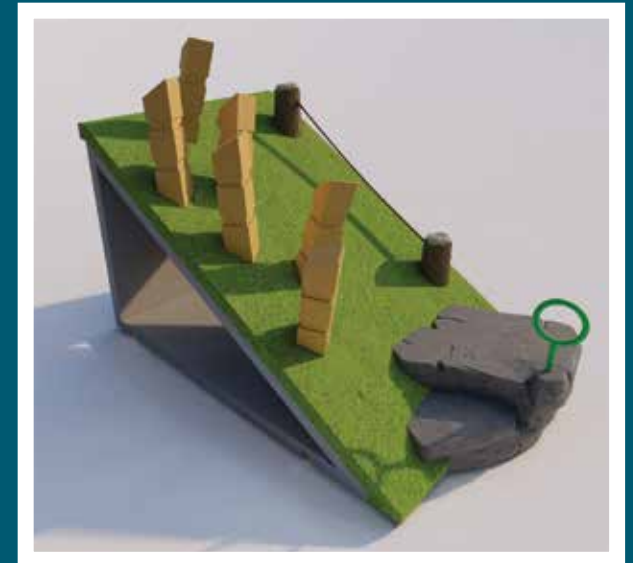
**PLAYTRAILS:** While designing your embankment, consider additional access between the lower and upper levels. ADA access is critical. Also, kids will find a shortcut, so why not add in something playful. If it's fun, they'll use it, and they may even stay off of the plants!



**SIMPLE SET PLAYTRAIL:** This playful shortcut is a practical way to add a nearby path back up to the top of the hill. Reduce risk by keeping kids away from the slide. Super durable one-piece concrete, and simple to install.



PLAYTRAIL STEPS



ADA TRANSFER STATION

**SIMPLE SET ADA TRANSFER PLATFORM:** Adding the required ADA Transfer Platform to your embankment couldn't be easier. Optional Log Posts and/or Rope Climb can be added, which offer additional assistance to children with mobility issues.

# ACCESSORIZE YOUR HILL

**PERSONALIZE:** Increase the play value of your hill by adding playful components. Tunnels are a great way to add additional play opportunities. Our tunnels are open bottomed, so the safety surface can be added all the way through.

Add custom steps, round bollards, or other custom elements to your slope. UPC Parks is ready to help you develop your project, using our innovative and long lasting concrete products.



## SAFETY & WARRANTY



To verify product certification  
Visit [www.ipema.org](http://www.ipema.org)

**MATERIALS:** Imagacast, our proprietary concrete, is a full aggregate modified precast concrete, used in many of the themed concrete parts and embankment slides. It is tough, durable, and won't get hot in the sun the way steel does.

**SAFETY STANDARDS:** All UPC Parks products are designed to ASTM 1487 Specifications for Playground Equipment for Public Use, Consumer Product Safety Commission public playground recommendations, and the Canadian standard CSA Z614 for children's play spaces and equipment. Many of UPC Parks standard products are IPEMA certified, which means they have been tested to ASTM and CSA playground safety standards and certified by a third party agency.

**INSTALLATION:** The best way to install UPC Parks embankment slides is using the Simple Set base. Using the Simple Set base prevents most installation errors from occurring. Alternatively, embankment slides can be anchored in place using concrete footings poured on site. Since each location is different in regards to soil conditions and engineering requirements, there are no standard details for these types of footings. They would need to be designed by the project engineer, or by UPC Parks, for an additional fee. For this reason, as well as ease of installation, the Simple Set base is highly recommended.

**WARRANTY:** UPC Parks Imagacast concrete embankment slides come with a limited twenty-year warranty. With proper maintenance, precast concrete has a reputation for lasting much longer. Contact UPC Parks for our full warranty, including terms and conditions.



[www.upcparks.com](http://www.upcparks.com)

530-605-2664

